



Integrated Solutions For Global Impact

MAA GROUP

Project and Construction Management (PCM)

- Integration Management
- Quality Assurance
- Schedule Management
- Cost Management
- Risk Management
- Investment Feasibility Study
- Value Engineering
- Procurement Management
- Program Management
- Contract Management



MAA Sustainable Engineering Action



Founded in 1975, MAA is a leading engineering and consulting service provider in the East and Southeast Asian region with a broad range of focus areas including infrastructure, land resources, environment, buildings, and information technology.

To meet the global needs of both public and private clients, MAA has developed sustainable engineering solutions - ranging from conceptual planning, general consultancy, engineering design to project management.

MAA employs 1000 professional individuals with offices in the Greater China Region (Beijing, Hong Kong, Shanghai, Taiwan), Mekong Region (Bangkok), and Southeast Asian Region (Singapore), creating a strong professional network in East/Southeast Asia.

MAA's business philosophy is to provide professional services that will become an asset to our clients with long lasting benefits in this rapidly changing social-economic environment. ASSET represents five key components that underline MAA's principles of professional services:

- A**dvanced technology
- p**roject **S**afety
- c**lient's **S**atisfaction
- E**conomical solution
- T**imely completion



MAA Sustainable Eng. Concepts

Project and Construction Management (PCM)



- High Rise Buildings
- International Cooperation
- Industrial Park Development
- Education
- Cultural Facilities
- Hospital & Pharmaceutical Facilities
- Sustainable Engineering
- BIM Management and Engineering Integration Service

Create a Green Environment



Adoption of Green Engineering Methods



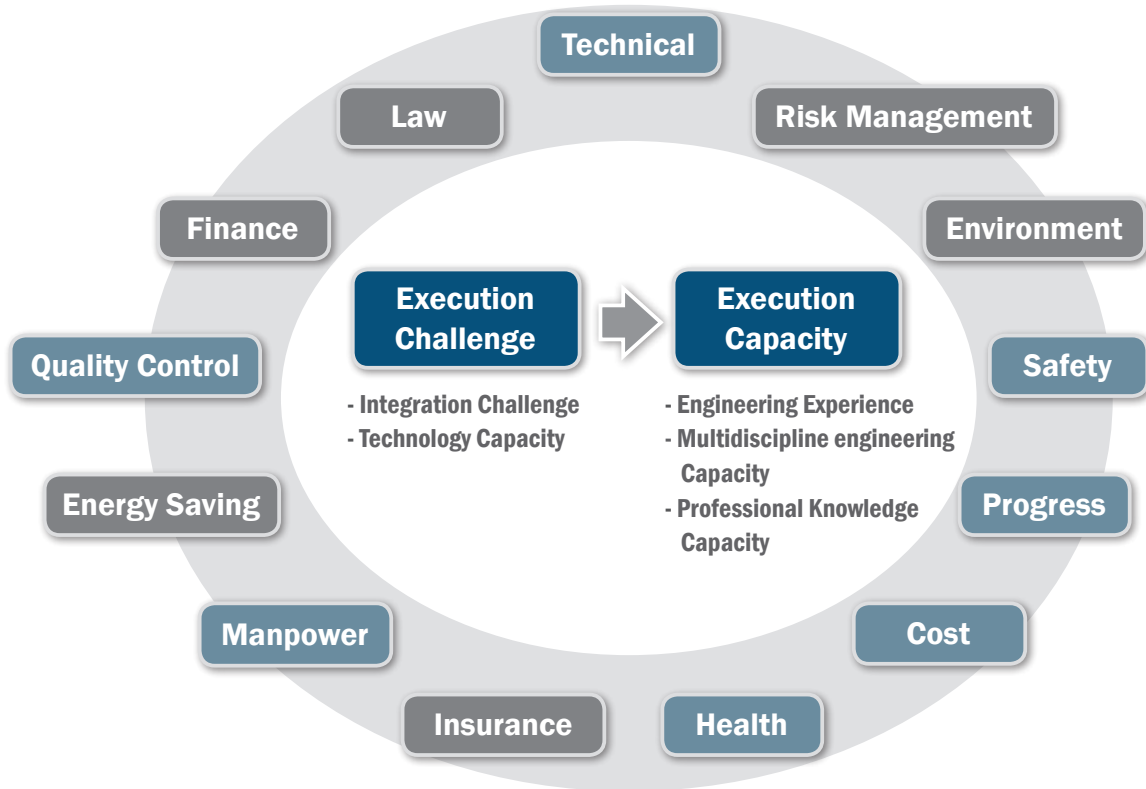
Selection of Green Building Materials



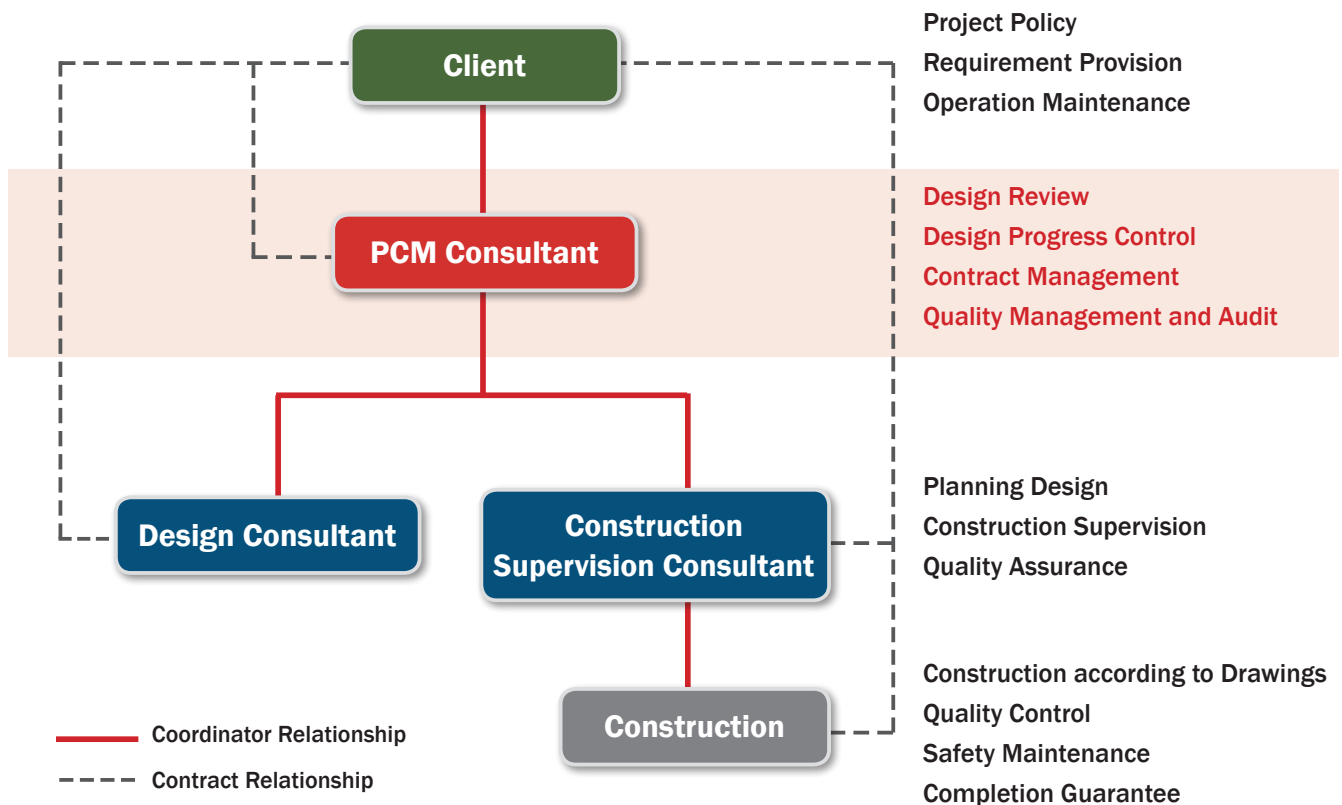
Adoption of Green Energy



Background



Organization Chart for the Conventional Design-Bid-Build Approach



Track Records - High Rise Buildings

Taipei 101 Financial Center, Taiwan - the Tallest Building in the World when Completed in 2004

Taipei 101 has 101 storeys above ground and 5 underground basements. Upon its completion Taipei 101 was the tallest building (509.2m high) in the world. It is also the tallest green building in Taiwan, with the biggest damper in the world.



Shin Kong Life Tower, Taiwan - the Tallest Building in Taipei when Completed in 1994

Shin Kong Life Tower is the third highest building in Taiwan standing at 51 storeys (244.15m). It was the tallest building in Taiwan when it was constructed. It is Taiwan's first building constructed with project management service.



New Taipei City Government Headquarters, Taiwan

This building is a 33-storey high-rise building with a 4-level basement which is the tallest among all of the government centers when completed in March 2003.



Track Records - International Cooperation

2009 World Games Main Stadium (Design-and-Build Project), Kaohsiung, Taiwan

The main stadium is a roofed competition venue having a standard 400m track and football field with 40,000 permanent seats and spare space for additional 15,000 temporary seats to be furnished for big events.



Kaohsiung Exhibition and Convention Center, Taiwan

It has a total area of 44,929 m². The international standard exhibition center, when built, will accommodate 1,500 booths, as well as provide a 2,000-seat conference hall, two 800-seat medium conference halls, and several meeting halls with the newest software & hardware facilities including outdoor show room, roadway, wharf and landscaping facility.



Core Pacific City Shopping Mall, Taipei, Taiwan

The building is the biggest shopping mall in Taiwan when completed which has 13 storeys with a 7 level basement. It is the deepest excavation project in Taiwan to date.



National Conference and Exhibition Center in Nangang, Taipei, Taiwan

The 2,350 booths exhibition center will be an addition to the existing Nankang Conference and Exhibition Center to achieve the targeted 5,000 booth exhibition area.



Track Records - Industrial Park Development

The First Area of Dan Hai New Town Development Phase II, Taiwan

In order to become a model of the new towns in Taiwan, the project is planned as new eco-city which is developed in low-carbon and sustainable direction.



Shuei-Nan Economic & Trade Park, Taiwan

With a total area of 254 ha the park will integrate international standard trade, research, education, recreation and cultural facilities in the park.



Track Records - Education

Taiwan Architecture and Technology Center of National Taiwan University of Science and Technology, Taiwan

The Taiwan Architecture and Technology Center is a 7 storeys building with one basement level. The building's structure is composed of segments that create the aesthetic appearance of sailboat sails. In addition to winning the (2012) PMI Taiwan Best Practice on Project Management Award, the 12th (2010) Golden Award for Architecture and this project received the "Green Building" Bronze Label.



Post-Earthquake Reconstruction of 22 Schools in Yunlin, Chiayi and Tainan, Taiwan

Reconstruction of 22 campuses in Yunlin, Chiayi, Tainan counties and Chiayi, Tainan cities after the 921 Chi-Chi Earthquake.



Project management for building (30 bldgs.) construction in National Defense University, Taiwan

The project includes 30 buildings with total area of 31 hectare.



National Central Library Taiwan Branch Relocation, Taiwan

The library is a steel structure 7-storey building with a concrete 3-storey basement.



National Taichung Library, Taiwan

The library is a 5-storey building with 2-level basement which is the first state-level digital library in Taiwan. The L-shaped building embraces the green belt of the site in a concave gesture that envelopes a landscape of native plants and low maintenance wind-resisting shrubs.



Track Records - Cultural Facilities

The Modern Multi-Functional Gymnasium in Kaohsiung (K-ARENA, BOT Project), Taiwan

The project is divided into two parts: Gymnasium & auxiliary facilities and shopping mall. The gymnasium is a 6-storey building (42.3m in height) with steel structure. Shopping mall is a 10-storey building (48.6m in height) with 3 levels (10.2m in depth) of basement mainly for parking space.



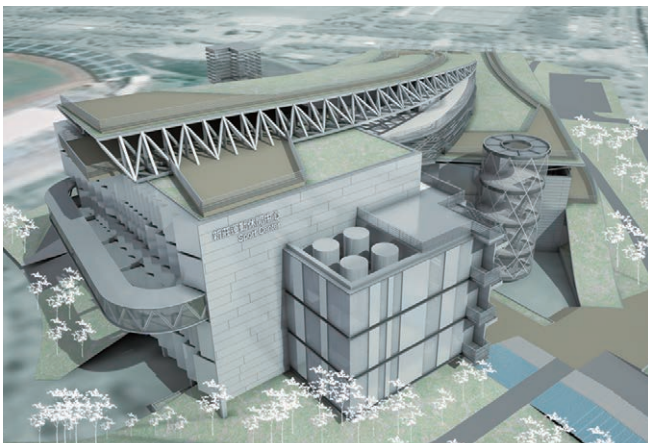
Liudui Hakka Cultural Park, Taiwan

The Liudui Hakka Cultural Park in Neipu Township in the southern county of Pingtung combines Hakka traditions, architecture and customs with modern concepts such as environmental protection. The total area is about 4.3 hectare.



Xin-Zhuang Sports and Recreational Center, Taiwan

The Xin-Zhuang Sports and Recreational Center is a 3-storey reinforced concrete building (21m high) with 3 levels of basements. The total site area is 28,313 m², and the architecture occupies 7,191 m² with a total floor area of 32,506 m². Facilities include swimming pool, SPA pool, badminton room, poolroom, dancing room, gym., rock climbing field, play room, show room and restaurant.



National Taiwan Drama Arts Center Project, Taiwan

The Project plan is to provide rehearsing and performing spaces for GuoGuang Opera Company, National Chinese Orchestra, Taiwan Music Center and Taiwan National Chorus. The construction site area is 17,631.72 m² and located in Shilin Dist., Taipei City, Taiwan. The construction will include Drama Production, Black-Box House, Rehearsal room, Offices, Research and Promotion Spaces, Public Service Spaces and so on. The new building is a 7-storey building with 3-storey of basement and total area is 35,819 m².



Track Records - Hospital & Pharmaceutical Facilities

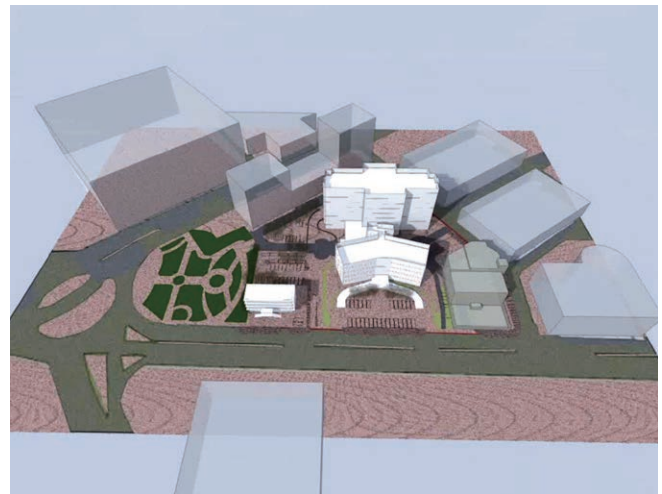
National Cheng Kung University Hospital Extension Project, Taiwan

The new building is a 10-storey building with 3 level of basement, with total area of 65,595.64 m². The project received The Tenth (2010) Public Construction Golden Award in December 2010.



Emergency and Critical Care Building of New Taipei City Hospital Sanchung Branch

In order to increase the convenience of seeking medical service for citizen in New Taipei City, the New Taipei City Hospital plans to construct the Emergency and Critical Care Building in Sanchung Branch for extending the operational scope and improving the medical environment. The expansion project goal is to create an integrated medical center by providing a diversified and instant medical service on emergency and critical care.



Track Records - Sustainable Engineering

National Nanke International Experimental High School, Taiwan

The project received the "Green Building" Diamond Label which should meet all nine criteria for Green Buildings. This is the first school and campus building facility that won the Diamond Label in Taiwan.



Zhonghe Land and Tax Office Building and Underground Parking Lot, Taiwan

The building, located in Zhonghe District, New Taipei City, is a 7-storey RC Building with a 3-level basement consisting of 136 cars underground parking lot. The building adopted a variety of sustainable designs, such as the installation of solar panels on the roof which generates the electricity for public areas, the adoption of green building material for energy saving and the extension of the green belt from the building to the Fuxing Park nearby, and design under a 200 year flood prevention criteria. the building received multiple awards and recognitions , including:

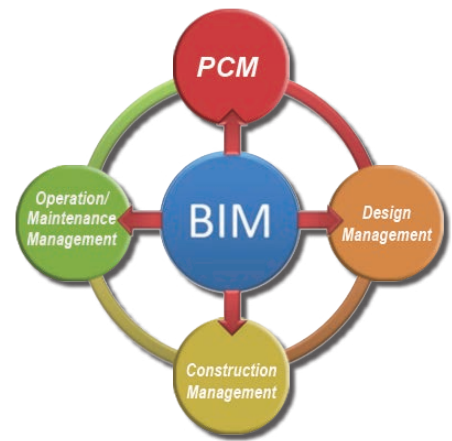
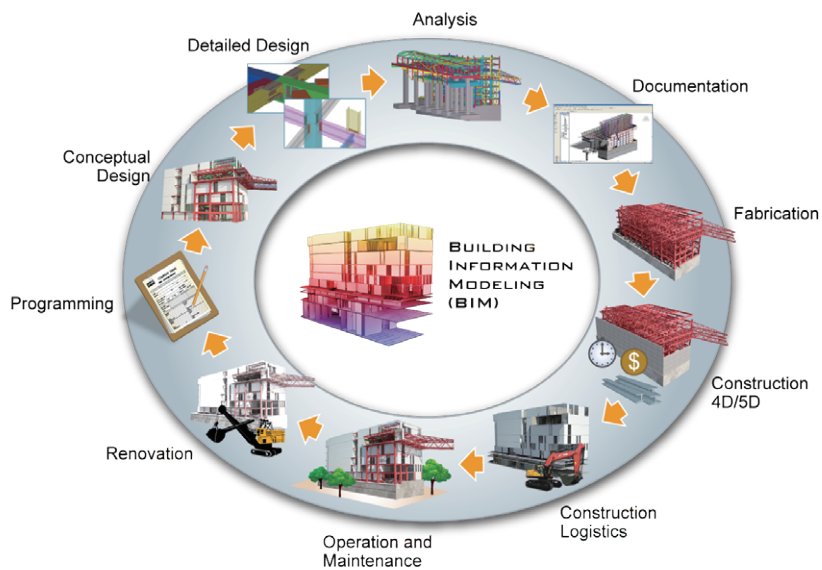
1. The (2011) Public Construction Golden Quality Award
2. Outstanding Award of Green Fence given by New Taipei City Government
3. "Intelligent Building" Label given by the Ministry of Interior
4. "Green Building" Bronze Label given by Taiwan Architecture and Building Center (TABC)
5. Public Construction Highest Quality Award given by New Taipei City Government.



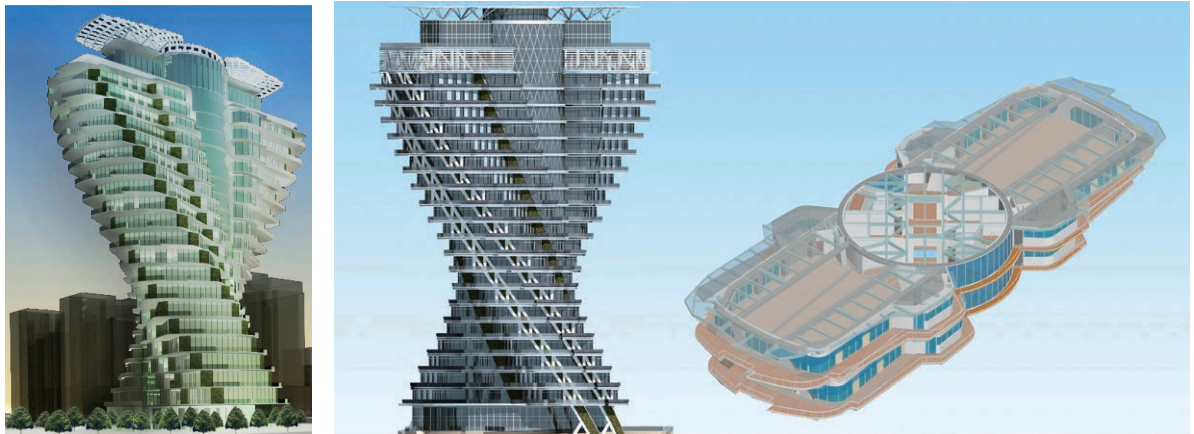
BIM Management and Engineering Integration Service

BIM = 3D + Digitalized Information
+ New Production Press

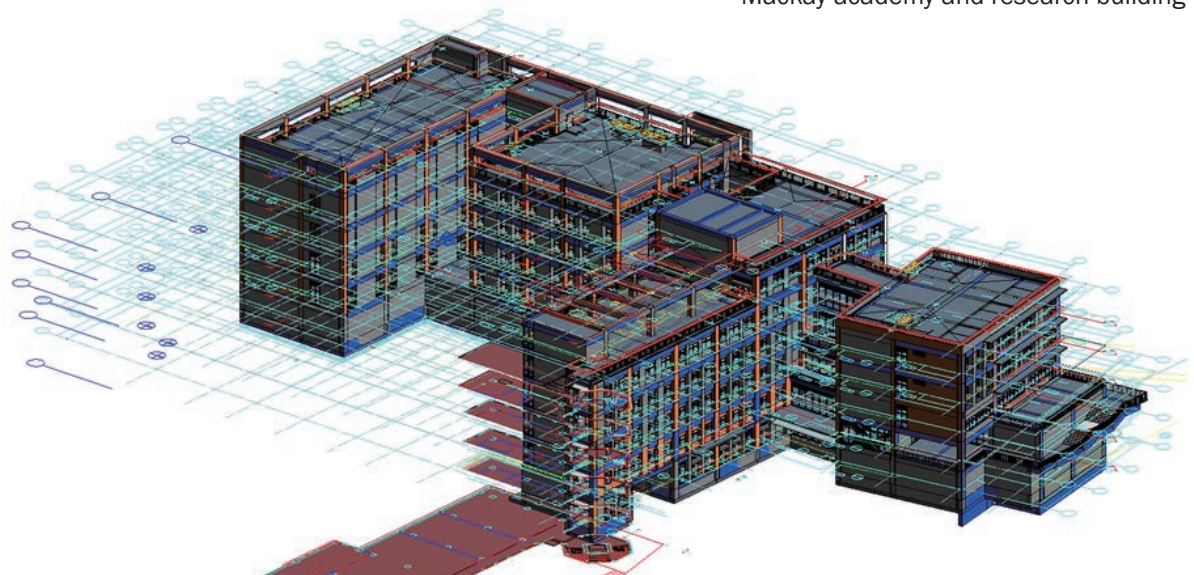
BIM Information Management Platform



Agora high-end residential building

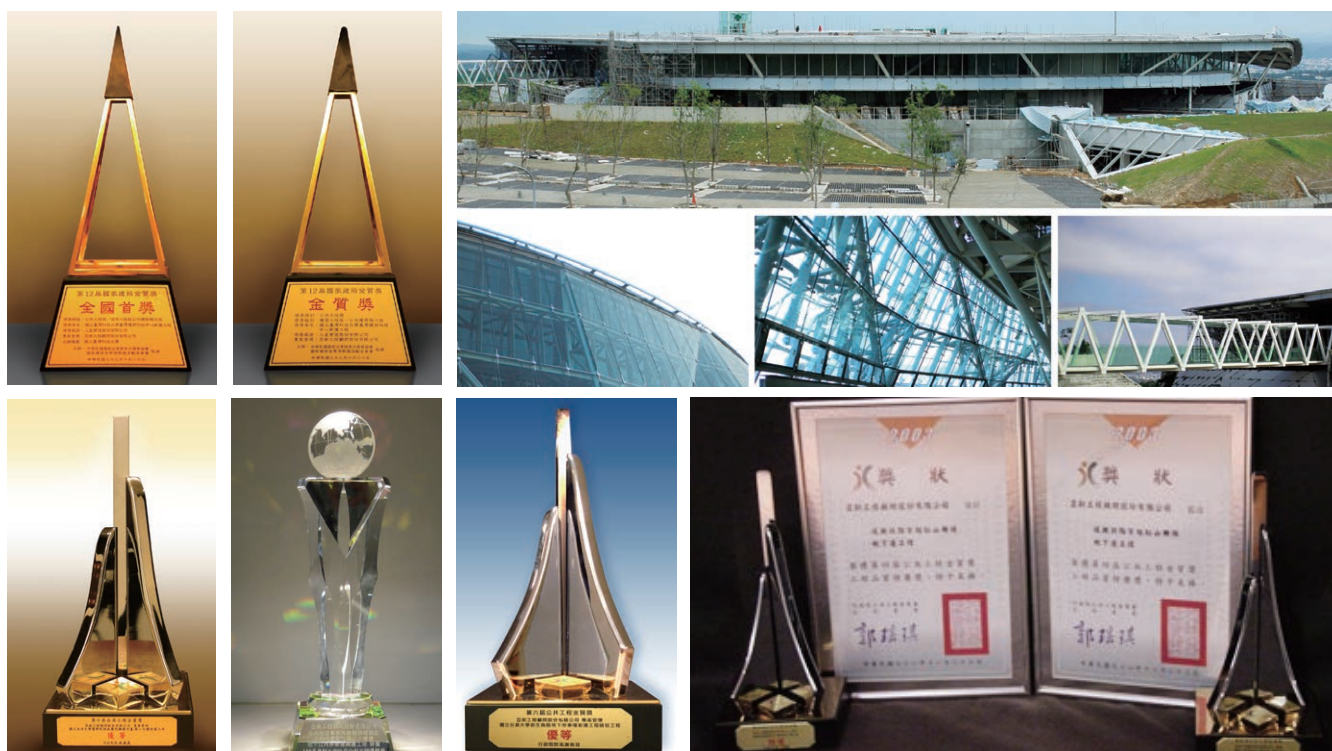


Mackay academy and research building



Awards

2012	Enterprise Project Management Benchmarking Award
2012	The PMI Taiwan Best Practice on Project Management Award for Architecture for the Construction of Taiwan Architecture and Technology Center of National Taiwan University of Science and Technology.
2011	The 11th (2011) Public Construction Golden Quality Award for Taiwan Hakka Cultural Center Miaoli Park
2011	The 11th (2011) Public Construction Golden Quality Award for The Taiwan Architecture and Technology Center of National Taiwan University of Science and Technology
2011	The 11th (2011) Public Construction Golden Quality Award for Zhonghe Land and Tax Office Building and Underground Parking Lot
2011	The 2011 Public Construction Highest Quality Award by New Taipei City Government for Zhonghe Land and Tax Office Building and Underground Parking Lot
2010	Taiwan "Green Building" Diamond Label for the Construction of School Building (Phase 1) of National Nanke International Experimental High School
2010	The 10th (2010) Public Construction Golden Quality Award for Project Management of National Chengkung University Hospital Expansion project.
2010	The 12th (2010) National Golden Award for Architecture for the Construction of Taiwan Architecture and Technology Center of National Taiwan University of Science and Technology.



MAA Engineering Consultants International Ltd.

Room 605, 6F, Opulent Building, 402-406 Hennessy Road, Wanchai, Hong Kong SAR, China
 Tel: (852) 2527-0747 Fax: (852) 2861-2081 E-mail: maai@hk.maaconsultants.com

Moh and Associates, Inc.

Oriental Technopolises Building A, 22F, No.112, Xintai Wu Road, Section 1, Xizhi District, New Taipei City 221411, Taiwan, R.O.C.
 Tel: (886-2) 2696-1555 Fax: (886-2) 2696-1166 E-mail: maagroup@maaconsultants.com

Central Taiwan Office

10F.-2, No. 424, Zhongming Rd., North Dist., Taichung City 404619, Taiwan, R.O.C.
 Tel: (886-4) 2202-6536 Fax: (886-4) 2202-6636 E-mail: maatc@maaconsultants.com

Southern Taiwan Office

6F, No.239,Yixin Yi Road, Qianzhen District, Kaohsiung City 80652, Taiwan, R.O.C.
 Tel: (886-7) 536-8800 Fax: (886-7) 536-2200 E-mail: maakh@maaconsultants.com

MAA Engineering Consultants (Beijing) Co., Ltd.

Room221, 2F, No.19Building, No.71Shoupakou South Street Xicheng District Beijing 100055, China
 Tel: (86-10) 8833-7680 Fax: (86-10) 8833-7681 E-mail: maabeijing@163.com

MAA Engineering Consultants (H. K.) Ltd.

Room 605, 6F, Opulent Building, 402-406 Hennessy Road, Wanchai, Hong Kong SAR, China
 Tel: (852) 2527-0747 Fax: (852) 2861-2081 E-mail: maai@hk.maaconsultants.com

MAA Consultadoria em Engenharia S.A. Sucursal de Macau / Macau Office

15-G Rua De Ferreira Do Amaral, Edif. Lau Luen 1/F, Macau
 Tel: (852) 2527-0747 (886-2) 2696-1555 E-mail: maagroup@maaconsultants.com

MAA Consultants Co., Ltd.

221/1 Soi Prachachuen 37, Prachachuen Road, Bang Sue, Bangkok 10800, Thailand
 Tel: (66-2) 975-9300, 975-9310 Fax: (66-2) 975-9312 E-mail: maa@maathai.com

Moh and Associates (S) Pte. Ltd.

#04-09 Golden Mile Complex, 5001 Beach Road, Singapore 199588
 Tel: (65) 6295-0611, 6295-0608 Fax: (65) 6298-7653 E-mail: maaspl@singnet.com.sg

MAA Consultants (Myanmar) Co., Ltd.

Tower A, Room (2-A) Royal Sin Min Condo, Corner of Strand Road & Sin Min Street Ahlone Township Yangon, Myanmar
 Tel: (95) 926-1307-070 E-mail: maagroup.myanmar@gmail.com

SURV INC. (SHANGHAI)

Unit F606, Ruijin Building, No.205 Maoming Nan Road, Huangpu District, Shanghai 200020 China
 Tel: (86-21) 6415-9950 Fax: (86-21) 6472-0895 E-mail: surv.sha@urbanmatics.com

SURV LTD.

Oriental Technopolises Building A, 22F, No.112, Xintai Wu Road, Section 1, Xizhi District, New Taipei City 221411, Taiwan, R.O.C.
 Tel: (886-2) 2696-2807 Fax: (886-2) 2696-1782 E-mail: surv.tpe@urbanmatics.com



亞新工程顧問(集團)公司
MAA Group Consulting Engineers

Website: www.maaconsultants.com E-mail: maagroup@maaconsultants.com