



Integrated Solutions For Global Impact

MAA GROUP

Geotechnical Engineering

- Foundation and Deep Excavation
- Slope Protection and Earth Retaining Works
- Slope Development
- Groundwater Modeling
- Ground Improvement
- Embankment
- Dam Safety
- Tunnels
- Geo-Environmental Engineering
- Soil and Water Conservation Design
- Geo-Information Technology
- In-situ and Laboratory Test
- Underground Construction Risk Management – Geotechnical Engineering Specialty Consultancy (GESC)
- Seismic Risk



MAA Sustainable Engineering Action



Founded in 1975, MAA is a leading engineering and consulting service provider in the East and Southeast Asian region with a broad range of focus areas including infrastructure, land resources, environment, buildings, and information technology.

To meet the global needs of both public and private clients, MAA has developed sustainable engineering solutions - ranging from conceptual planning, general consultancy, engineering design to project management.

MAA employs 1200 professional individuals with offices in the Greater China Region (Beijing, Hong Kong, Shanghai, Taiwan), Mekong Region (Bangkok), and Southeast Asian Region (Singapore), creating a strong professional network in East/Southeast Asia.

MAA's business philosophy is to provide professional services that will become an asset to our clients with long lasting benefits in this rapidly changing social-economic environment. ASSET represents five key components that underline MAA's principles of professional services:

- A**dvanced technology
- p**roject **S**afety
- c**lient's **S**atisfaction
- E**conomical solution
- T**imely completion



MAA Sustainable Eng. Concepts

Geotechnical Engineering



- Railways
- Airports
- Roads and Highways
- Buildings
- Hazard and Risk Management
- Geo-Environment
- Bridges
- Ports
- Tunnels
- New Towns
- Energy
- Dam Safety
- Laboratory Test

Create a Green Environment



Adoption of Green Engineering Methods



Selection of Green Building Materials



Adoption of Green Energy



What We Can Do

Slope Protection



Deep Excavation of Highrise Facilities



Dam Safety Evaluation



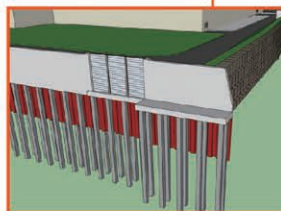
High Speed Railway Tunnel



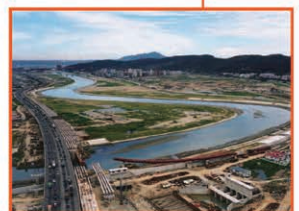
Highway Tunnels



Piperof Excavation



Flood Protection Dikes



Land Reclamation



Common Utility Duct Tunnelling



TBM



MRT Station



Vibration Mitigation

Railways

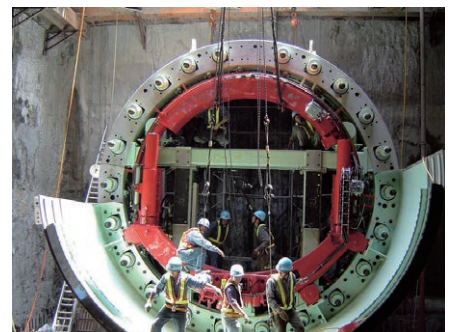
- Embankment design
- Bridge, viaduct and abutment foundation design
- Rock tunnel/cut-and-cover tunnel/shield tunnel design
- Retaining wall and deep excavation temporary work design
- Slope protection
- Risk management
- Existing buildings protection
- Geotechnical construction consultancy

Taiwan High Speed Rail



Tunnelling 9 m below existing freeway

Mass Rapid Transit Systems (Taipei, Kaohsiung, Taichung, Bangkok)



MRT blue line extension in Bangkok

Largest circular excavation with diameter of 140 m in Taiwan

First Double O-Tube (DOT) tunnelling in Taiwan

Airports

- Ground improvement design
- Runway and taxiway pavement design

Taiwan Taoyuan International Airport Rehabilitation Project



Suvarnabhumi International Airport, Thailand



Installation of 40,000,000 m PVD with depth of 35 m

Roads and Highways

- Slope protection
- Mined tunnel design
- Embankment design
- Bridge/viaduct and abutment foundation design

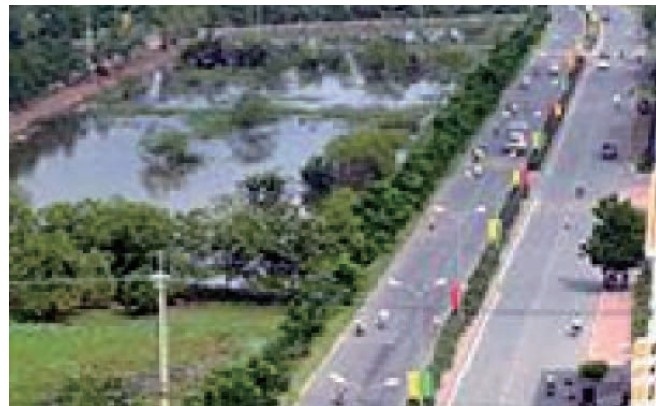
Xinyi Expressway, Taiwan



Braddel Road Flyover, Singapore



Nguyen Van Linh Parkway, Vietnam



Buildings

- Excavation safety evaluation
- Geotechnical construction consultancy
- Retaining wall and temporary work design
- Risk management
- Existing buildings protection
- Instrumentation supervision and interpretation

Taipei 101, Taiwan



The tallest building in the world when finished 2004 with the height of 508m and 101 stories

Core Pacific City Shopping Mall, Taiwan



Excavation depth up to 32 m in soft ground - the deepest excavation for building facilities in Taipei



Kaohsiung Exhibition and Convention Center, Taiwan



Marina Square/Pontiac Marina, Singapore



The Gateway, Singapore



Bugis Junction Redevelopment, Singapore



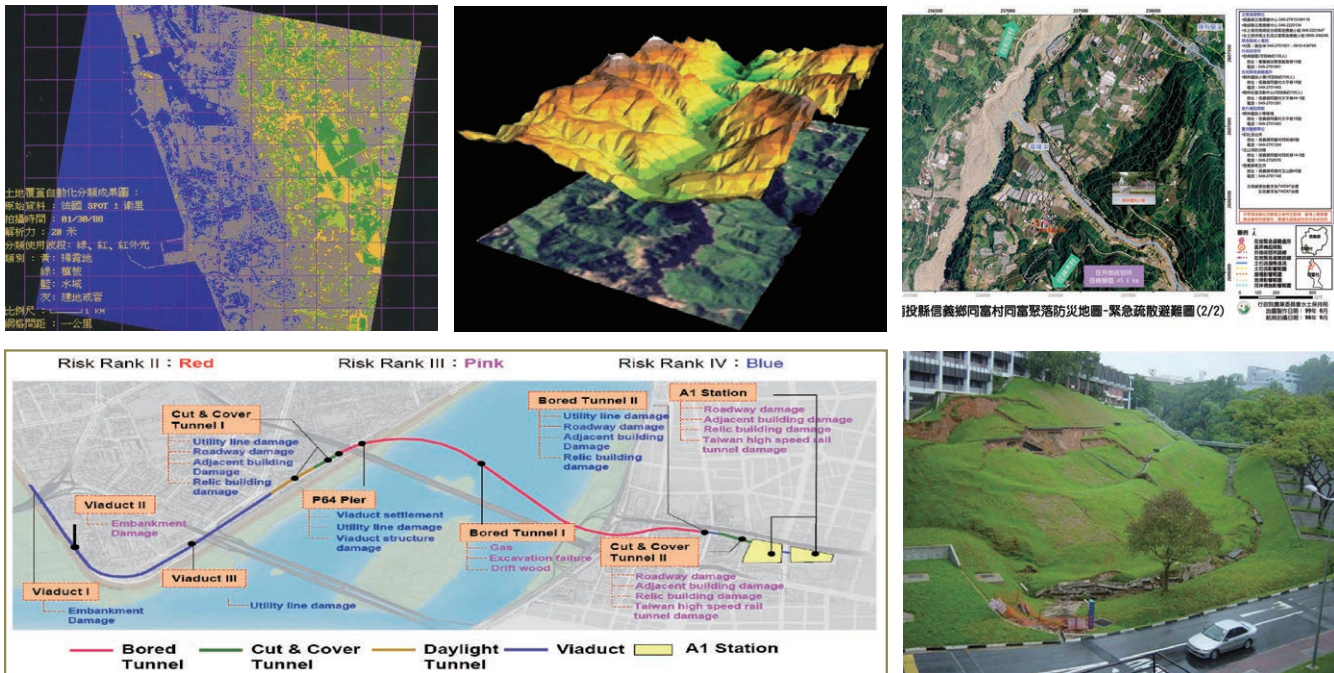
The Coasta Rhu, Singapore



Hazard and Risk Management

- Risk management
- Geotechnical/geological hazard analysis
- Establishment and integration of geo-information

Ground Subsidence Investigation and Geological Maps & Land Use Sensitivity Analysis, Taiwan



Risk identification and management profile of airport link MRT

Geo-Environment

- Landfill design
- Remediation evaluation and design
- Groundwater protection policy and regulation study
- Soil and groundwater contamination investigation and monitoring

Geo-Environment Investigation



Bridges

- Bridge and abutment foundation design
- Slope protection

Shinwei Butterfly Bridge, Taiwan



Lofu Bridge, Taiwan



Nanfang Au Bridge, Taiwan



Ports

- Slope protection
- Wharf foundations design
- Land reclamation analysis and design

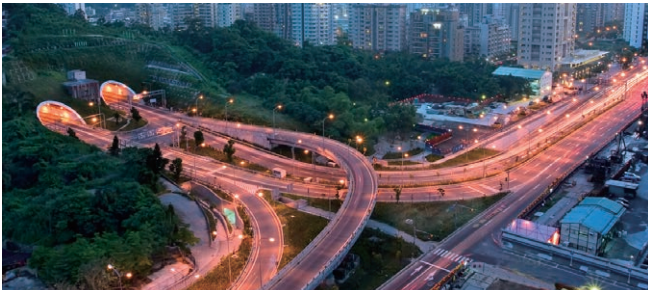
Matsu Interior Commercial Harbor Project in LienChiang County, Taiwan



Tunnels

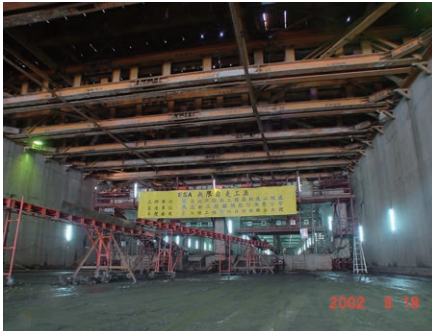
- Slope protection
- Tunnel portal design
- Temporary and permanent structure design
- Grouting treatment design
- Pipe-roof excavation design
- Geotechnical construction consultancy

Hsinyi Expressway, Taiwan



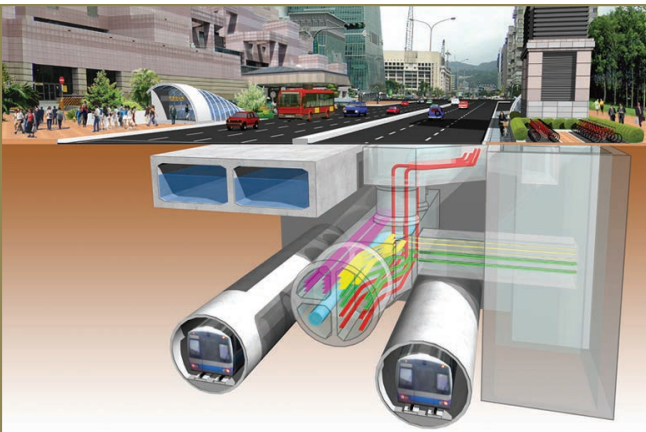
Cut and cover tunnel

Fuhsing North Road Underpass through Taipei Song Shan International Airport, Taiwan



Combining pipe-roofing and segmental pull-pushing (ESA) is applied in soft ground to meet the strict requirement on settlement control

Common Utility Duct, Taiwan



Construction of tunnels in close proximity to existing structures / facilities



New Towns and New Communities

- Slope protection
- Land reclamation design
- Pipelines and facilities excavation design
- Ground improvement assessment design

Tamhah New Town, Taiwan



Shezhidao Development, Taiwan



An aerial photograph showing a large, planned residential development. The houses are arranged in neat rows and clusters, all featuring prominent red-tiled roofs. The development is situated in a valley, with rolling hills and mountains in the background. A dirt road or path winds through the area, and there are some open fields and patches of vegetation interspersed among the buildings. The overall scene suggests a well-organized housing project in a rural or semi-rural setting.

An aerial photograph of a coastal resort. In the foreground, a large body of blue water contains a single white sailboat. A curved shoreline separates the water from a resort complex. The resort features numerous buildings with prominent red-tiled roofs and white walls, interspersed with green lawns and palm trees. Two tall, white, cylindrical towers are notable landmarks within the resort. A marina filled with many small white sailboats is situated near the center of the resort. In the background, across a wide expanse of water, a dense urban skyline with various skyscrapers is visible under a sky filled with large, white clouds.

[illegible]

- **Ground improvement design**
- **Vibration effect assessment**
- **Seismic and earthquake effect assessment and analysis**

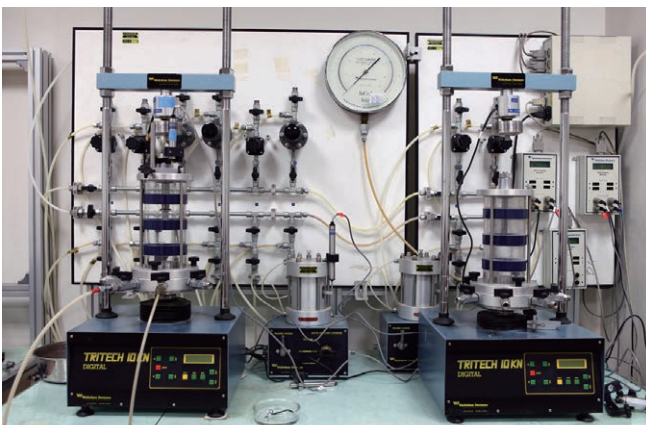
- Slope protection
- Safety assessment and planning of emergency action

Laboratory Testing

As part of the mission of MAA to provide leading design services to both private and public clients, MAA has continued to ensure the quality of testing results carried out by MAA Laboratories. The MAA Laboratory in Taiwan, founded in 1975, has been operated under ISO9001 in 2000 and has received the approval of Taiwan Accreditation Foundation (TAF) in 2002. Over the past 38 years, MAA Laboratory has expanded its scale gradually, comprising of ISO17025 certified engineers and technicians and high-tech equipments. ISO17025 “specifies the general requirements for the competence to carry out tests and/or calibrations, including sampling. It covers testing and calibration performed using standard methods, non-standard methods, and laboratory-developed methods.”

MAA Laboratory is equipped to provide simulation of soil behavior tests such as :

- **Constant Rate of Strain Test (CRS)**
- **Earth Pressure at Rest Consolidation (undrained, triaxial compression/extension) Test**
- **General Identification Test**
- **Compaction Test**
- **California Bearing Ratio (CBR) Test**
- **Unconfined Compression Test**
- **Direct Shear Test**
- **Triaxial Compression and Extension Test**
- **One-dimensional Consolidation Test**
- **Triaxial Permeability Test**



Awards

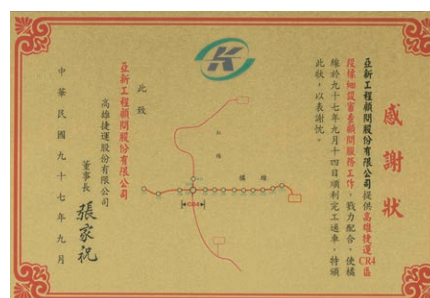
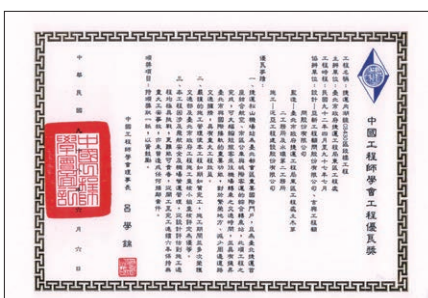
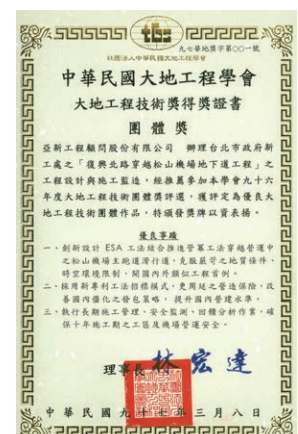
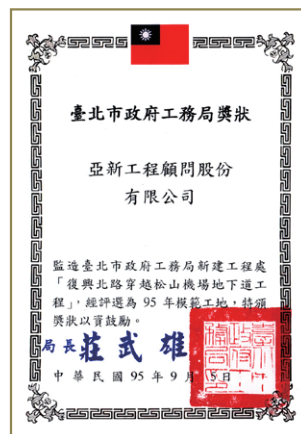
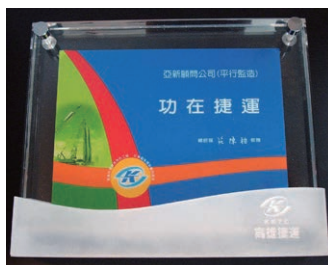
Taiwan High Speed Rail Corporation Appreciation Award

“CR4 Line, Kaohsiung MRT” detailed Design project – Kaohsiung Rapid Transit Corporation Appreciation Award

“Neihu Line, Taipei MRT” Project – Chinese Institute of Engineers Best Project of the Year Award

“Fushing North Road Underpass through Taipei Song Shan International Airport” Project

- Taiwan Geotechnical Society Best Group Performance of the Year Award
- Taipei City Government Appreciation Award
- Public Works Department of Taipei City Government Best Construction Project of the Year Award
- Public Works Commission Award of the Year



MAA Engineering Consultants International Ltd.

Room 605, 6F, Opulent Building, 402-406 Hennessy Road, Wanchai, Hong Kong SAR, China
 Tel: (852) 2527-0747 Fax: (852) 2861-2081 E-mail: maai@hk.maaconsultants.com

Moh and Associates, Inc.

Oriental Technopolises Building A, 22F, No.112, Xintai Wu Road, Section 1, Xizhi District, New Taipei City 221411, Taiwan, R.O.C.
 Tel: (886-2) 2696-1555 Fax: (886-2) 2696-1166 E-mail: maagroup@maaconsultants.com

Central Taiwan Office

10F.-2, No. 424, Zhongming Rd., North Dist., Taichung City 404619, Taiwan, R.O.C.
 Tel: (886-4) 2202-6536 Fax: (886-4) 2202-6636 E-mail: maatc@maaconsultants.com

Southern Taiwan Office

6F, No.239,Yixin Yi Road, Qianzhen District, Kaohsiung City 80652, Taiwan, R.O.C.
 Tel: (886-7) 536-8800 Fax: (886-7) 536-2200 E-mail: maakh@maaconsultants.com

MAA Engineering Consultants (Beijing) Co., Ltd.

Room221, 2F, No.19Building, No.71Shoupakou South Street Xicheng District Beijing 100055, China
 Tel: (86-10) 8833-7680 Fax: (86-10) 8833-7681 E-mail: maabeijing@163.com

MAA Engineering Consultants (H. K.) Ltd.

Room 605, 6F, Opulent Building, 402-406 Hennessy Road, Wanchai, Hong Kong SAR, China
 Tel: (852) 2527-0747 Fax: (852) 2861-2081 E-mail: maai@hk.maaconsultants.com

MAA Consultadoria em Engenharia S.A. Sucursal de Macau / Macau Office

15-G Rua De Ferreira Do Amaral, Edif. Lau Luen 1/F, Macau
 Tel: (852) 2527-0747 (886-2) 2696-1555 E-mail: maagroup@maaconsultants.com

MAA Consultants Co., Ltd.

221/1 Soi Prachachuen 37, Prachachuen Road, Bang Sue, Bangkok 10800, Thailand
 Tel: (66-2) 975-9300, 975-9310 Fax: (66-2) 975-9312 E-mail: maa@maathai.com

Moh and Associates (S) Pte. Ltd.

#04-09 Golden Mile Complex, 5001 Beach Road, Singapore 199588
 Tel: (65) 6295-0611, 6295-0608 Fax: (65) 6298-7653 E-mail: maaspl@singnet.com.sg

MAA Consultants (Myanmar) Co., Ltd.

Tower A, Room (2-A) Royal Sin Min Condo, Corner of Strand Road & Sin Min Street Ahlone Township Yangon, Myanmar
 Tel: (95) 926-1307-070 E-mail: maagroup.myanmar@gmail.com

SURV INC. (SHANGHAI)

Unit F606, Ruijin Building, No.205 Maoming Nan Road, Huangpu District, Shanghai 200020 China
 Tel: (86-21) 6415-9950 Fax: (86-21) 6472-0895 E-mail: surv.sha@urbanmatics.com

SURV LTD.

Oriental Technopolises Building A, 22F, No.112, Xintai Wu Road, Section 1, Xizhi District, New Taipei City 221411, Taiwan, R.O.C.
 Tel: (886-2) 2696-2807 Fax: (886-2) 2696-1782 E-mail: surv.tpe@urbanmatics.com



亞新工程顧問(集團)公司
MAA Group Consulting Engineers

Website: www.maaconsultants.com E-mail: maagroup@maaconsultants.com