



Integrated Solutions For Global Impact

MAA GROUP

Land Development

- Land Development Analysis
- Environment Data Analysis
- Development Plan
- Engineering Design
- Financial Plan
- Project & Construction Management



MAA Sustainable Engineering Action



Founded in 1975, MAA is a leading engineering and consulting service provider in the East and Southeast Asian region with a broad range of focus areas including infrastructure, land resources, environment, buildings, and information technology.

To meet the global needs of both public and private clients, MAA has developed sustainable engineering solutions - ranging from conceptual planning, general consultancy, engineering design to project management.

MAA employs 1000 professional individuals with offices in the Greater China Region (Beijing, Hong Kong, Shanghai, Taiwan), Mekong Region (Bangkok), and Southeast Asian Region (Singapore), creating a strong professional network in East/Southeast Asia.

MAA's business philosophy is to provide professional services that will become an asset to our clients with long lasting benefits in this rapidly changing social-economic environment. ASSET represents five key components that underline MAA's principles of professional services:

- A**dvanced technology
- S**afety
- S**atisfaction
- E**conomical solution
- T**imely completion



MAA Sustainable Eng. Concepts

Land Development



- Sustainable City
- Industrial & Commercial Parks
- Urban Planning & Land Use Developments
- New Towns & New Communities
- Sports & Leisure

Create a Green Environment



Adoption of Green Engineering Methods



Selection of Green Building Materials



Adoption of Green Energy



Sustainable City

Sustainable Resource



Sustainable Water Resource



Renewable Energy



O² Green Architecture



Sustainable Hazard Prevention



Cultural Property



Green Transport
(LRT, low carbon buses and electric vehicles)



Smart Living Information
Management



Water Resources Recycle



Emerging Strategic Industries



Solid Waste Minimization



Green Living Network

Industrial & Commercial Parks



Nangang Business Park

Location: Taipei City, Taiwan

Period: 1998 to 2005

Scope: construction management, environmental assessment, geotechnical monitoring and consultancy services

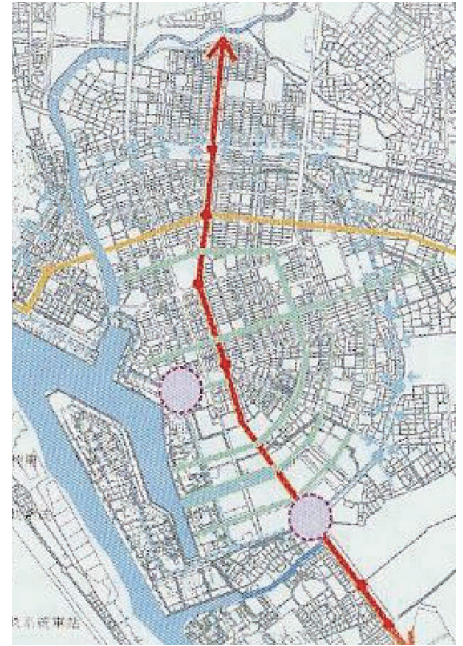


Shuei-Nan Economic & Trade Park Development Project

Location: Taichung City, Taiwan

Period: 2010 to 2014

Scope: project management, construction supervision



Kaohsiung Commerce and Trade Park

Location: Kaohsiung City, Taiwan

Period: 2003 to 2005

Scope: design, construction supervision



Land Acquisition of Beitou Shilin Technology Park

Location: Taipei City, Taiwan

Period: 2009 to present

Scope: supervision works including land fill, drainage and landscape construction, road construction, project residence construction, park and green land construction, sewer construction

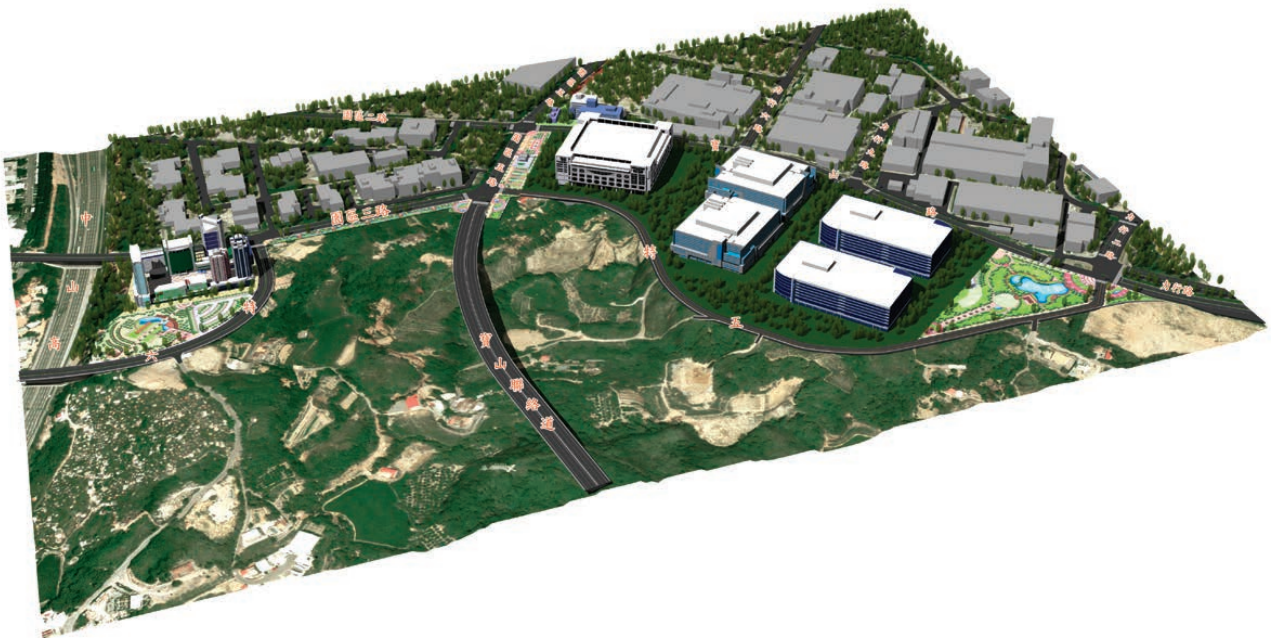


Hsinchu Science-Based Industrial Park

Location: Hsinchu County, Taiwan

Period: 1987 to 1994

Scope: data collection and analysis, measurement and geological investigation report, geological analysis



Design and Construction Supervision of Land Development along Sanwu Rd. of Hsinchu Science Park

Location: Hsinchu County, Taiwan

Period: 2006 to 2007

Scope: preliminary and detailed design, construction consultancy including drainage, roadway, sewerage, park, parking, landscaping, public facilities, and common duct



Land Levying Construction in North Side of Xin-Zhuang Knowledge and Industrial Park

Location: New Taipei City, Taiwan

Period: 2012 to 2014

Scope: subsoil investigation, geological drilling and in-site/lab testing, construction plan, planning and detailed design, unit price analysis and budget draw up, construction supervision



The National Biotechnology Research Park, Academia Sinica

Location: Taipei City, Taiwan

Period: 2012 to 2016

Scope: project management, construction supervision, consultation and review on planning and design

Urban Planning & Land Use Developments

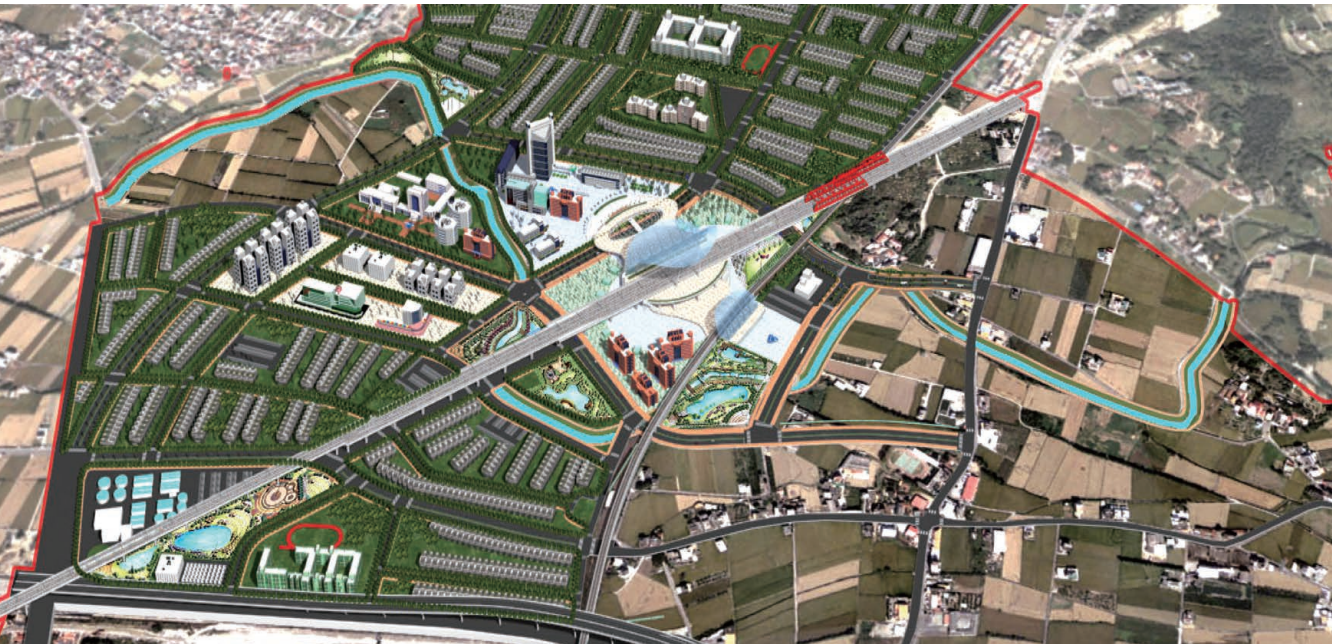


Land Levy for Special District of Taiwan High Speed Rail Hsinchu Station

Location: Hsinchu County, Taiwan

Period: 1998 to 2000

Scope: plan and design work including roadway, grading and drainage, irrigation, water supply, sewerage, utilities, common duct, and landscaping



Land Levy for Special District of Taiwan High Speed Rail Miaoli Station

Location: Miaoli County, Taiwan

Period: 2007 to 2010

Scope: preliminary and detailed design, construction consultancy service

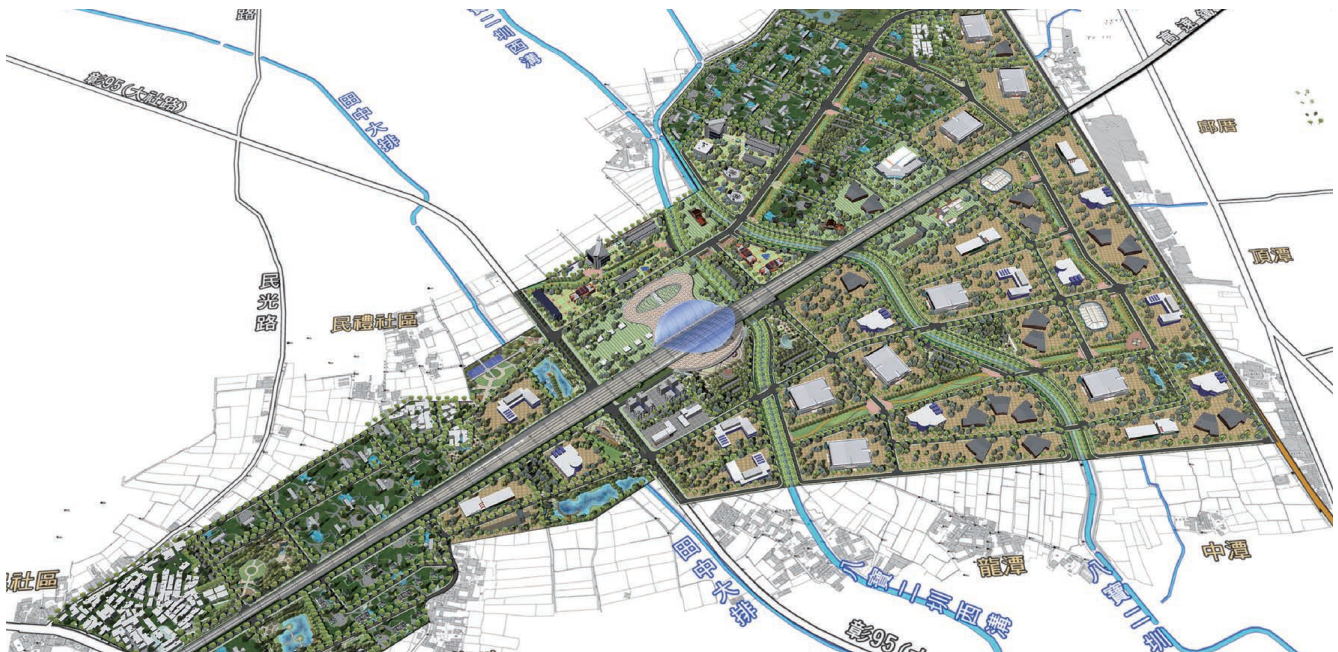


Dispatching Irrigating water for Use in the 4th Phase of Central Taiwan Science Park (Erlin High-Techpark) Project

Location: Zhanghua County, Taiwan

Period: 2010 to 2013

Scope: detailed design



Land Levy for Special District of Taiwan High Speed Rail Changhua Station

Location: Changhua County, Taiwan

Period: 2009 to 2014

Scope: project management and construction supervision

New Towns & New Communities



Construction Planning, Environmental Impact Assessment and Tree Protection Project for Shezi Peninsula Zone Expropriation in Shilin District, Taipei City

Location: Taipei, Taiwan

Period: 2013~2015

Scope: Construction Planning, Environmental Impact Assessment (EIA), Tree Protection Project



Danhai New Town Development Stage I Phase II & Stage II Phase I

Location: New Taipei City, Taiwan

Period: 1997 to 2002, 2012 to 2022

Scope: project construction management, consultation and review on the feasibility study, planning and design works



Land Acquisition Consultancy of New Xin-Zhuang District Government Center

Location: New Taipei City, Taiwan

Period: 2004 to 2007

Scope: site investigation, in-site/lab testing, geological investigation, engineering planning, preliminary design, detailed design and construction consultancy



Land Acquisition Consultancy of "Renew of Taiping Urban Planning for the 2nd General Update and Urban Plan Expansion Area" in Taichung County

Location: Taichung County, Taiwan

Period: 2003 to present

Scope: geological investigation, engineering planning and construction supervision



Consultancy Service on Public Works around Ilan County Administration Center Area

Location: Ilan County, Taiwan

Period: 1998 to 2006

Scope: planning, design and construction supervision

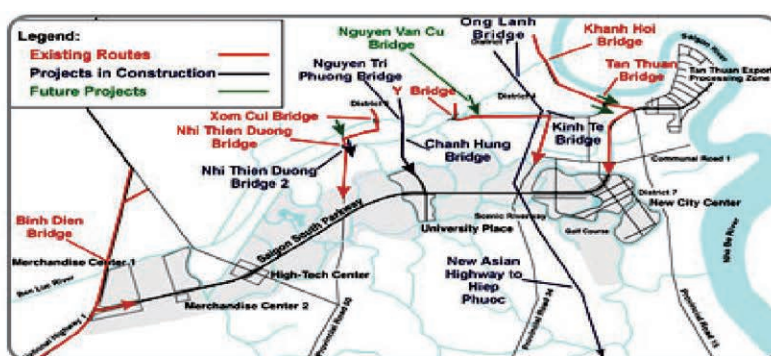


An Ecologically Sustainable New Country Village Development Project, Jiaxing City

Location: Zhejiang Province, China

Period: 2011/01 to 2011/10

Scope: plan and design of the basic public service of the main urban area



Saigon South - New City Center and Merchandise Center Development

Location: Ho Chi Minh city, Vietnam

Period: 1995 to 1996

Scope: engineering planning & design, construction planning, cost estimate



The Real Estate Development (Public -Private Partnerships Project)

Location: Suvarnabhumi Airport, Samut Prakarn, Thailand

Period: 2010 to 2011

Scope: feasibility study and consultancy services



Sports & Leisure



Main Stadium for 2009 World Game in Kaohsiung

Location: Kaohsiung, Taiwan

Period: 2005 to 2006

Scope: strategic planning, site analysis, engineering planning, tender documents preparing and administrative tasks



2017 Summer Universiade Taipei Athletes' Village Development Project

Location: New Taipei City, Taiwan

Period: 2013 to 2019

Scope: project management, construction supervision

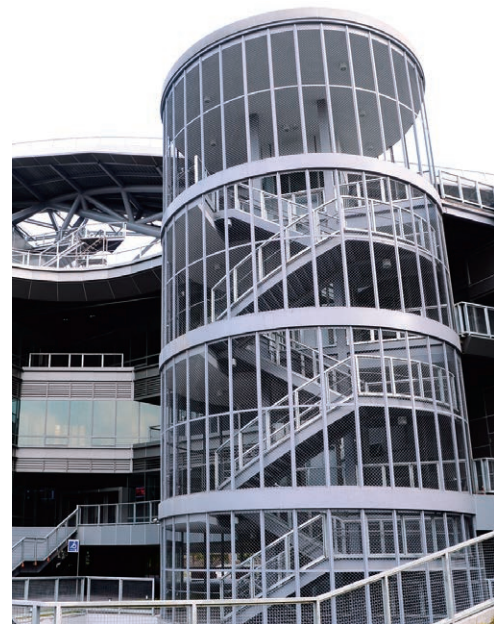


The Modern Multi-Functional Gymnasium in Kaohsiung (BOT)

Location: Kaohsiung, Taiwan

Period: 2004 to 2008

Scope: construction supervision, construction and financial document review, information application platform, project construction management



Xin-Zhuang Sports and Recreational Center

Location: New Taipei City, Taiwan

Period: 2008 to 2012

Scope: project planning and preliminary design, consulting of tender process, review of detailed design and budget, construction supervision and project management

MAA Engineering Consultants International Ltd.

Room 605, 6F, Opulent Building, 402-406 Hennessy Road, Wanchai, Hong Kong SAR, China
 Tel: (852) 2527-0747 Fax: (852) 2861-2081 E-mail: maai@hk.maaconsultants.com

Moh and Associates, Inc.

Oriental Technopolises Building A, 22F, No.112, Xintai Wu Road, Section 1, Xizhi District, New Taipei City 221411, Taiwan, R.O.C.
 Tel: (886-2) 2696-1555 Fax: (886-2) 2696-1166 E-mail: maagroup@maaconsultants.com

Central Taiwan Office

10F.-2, No. 424, Zhongming Rd., North Dist., Taichung City 404619, Taiwan, R.O.C.
 Tel: (886-4) 2202-6536 Fax: (886-4) 2202-6636 E-mail: maatc@maaconsultants.com

Southern Taiwan Office

6F, No.239,Yixin Yi Road, Qianzhen District, Kaohsiung City 80652, Taiwan, R.O.C.
 Tel: (886-7) 536-8800 Fax: (886-7) 536-2200 E-mail: maakh@maaconsultants.com

MAA Engineering Consultants (Beijing) Co., Ltd.

Room221, 2F, No.19Building, No.71Shoupakou South Street Xicheng District Beijing 100055, China
 Tel: (86-10) 8833-7680 Fax: (86-10) 8833-7681 E-mail: maabeijing@163.com

MAA Engineering Consultants (H. K.) Ltd.

Room 605, 6F, Opulent Building, 402-406 Hennessy Road, Wanchai, Hong Kong SAR, China
 Tel: (852) 2527-0747 Fax: (852) 2861-2081 E-mail: maai@hk.maaconsultants.com

MAA Consultadoria em Engenharia S.A. Sucursal de Macau / Macau Office

15-G Rua De Ferreira Do Amaral, Edif. Lau Luen 1/F, Macau
 Tel: (852) 2527-0747 (886-2) 2696-1555 E-mail: maagroup@maaconsultants.com

MAA Consultants Co., Ltd.

221/1 Soi Prachachuen 37, Prachachuen Road, Bang Sue, Bangkok 10800, Thailand
 Tel: (66-2) 975-9300, 975-9310 Fax: (66-2) 975-9312 E-mail: maa@maathai.com

Moh and Associates (S) Pte. Ltd.

#04-09 Golden Mile Complex, 5001 Beach Road, Singapore 199588
 Tel: (65) 6295-0611, 6295-0608 Fax: (65) 6298-7653 E-mail: maaspl@singnet.com.sg

MAA Consultants (Myanmar) Co., Ltd.

Tower A, Room (2-A) Royal Sin Min Condo, Corner of Strand Road & Sin Min Street Ahlone Township Yangon, Myanmar
 Tel: (95) 926-1307-070 E-mail: maagroup.myanmar@gmail.com

SURV INC. (SHANGHAI)

Unit F606, Ruijin Building, No.205 Maoming Nan Road, Huangpu District, Shanghai 200020 China
 Tel: (86-21) 6415-9950 Fax: (86-21) 6472-0895 E-mail: surv.sha@urbanmatics.com

SURV LTD.

Oriental Technopolises Building A, 22F, No.112, Xintai Wu Road, Section 1, Xizhi District, New Taipei City 221411, Taiwan, R.O.C.
 Tel: (886-2) 2696-2807 Fax: (886-2) 2696-1782 E-mail: surv.tpe@urbanmatics.com



亞新工程顧問(集團)公司
MAA Group Consulting Engineers

Website: www.maaconsultants.com E-mail: maagroup@maaconsultants.com